

**Mid-South Police Classic Regional
Police Pistol Combat
Championship Tournament**

April 16th through 18th, 2020



The Memphis Police Pistol Team is proud to announce the Mid-South Police Classic Regional Police Pistol Combat Championship Tournament. The Tournament will be held at the Memphis Police Firing Range at 4399 Academy Drive in Memphis.

We will be offering the NRA Open Class Semi-Automatic Pistol and Revolver Matches, Distinguished Semi-Automatic Pistol, Distinguished Production and Distinguished Revolver Matches, and Two and Four Officer Open Class Team Matches.

TOURNAMANT OFFICIALS: Tournament Director: LTC Michael Jones
Chief Range Officer: R/O Stephen Betz
Chief Statistical Officer: Mrs. Jan Newman

GOVERNING RULES: Current NRA Police Pistol Combat Rules will govern throughout the Tournament. All competitors are encouraged to review the current PPC rules. The NRA Police Pistol Combat Rule Book is available on-line at ppc.nra.org. You can also use your smart phone camera to scan the Quick Reader Code to the right or double click it with your computer cursor.



INDIVIDUAL ELIGIBILITY: Open to any eligible law enforcement member as defined in Police Pistol Combat Rule Section 2.4. Competitors must show current **Law Enforcement Identification** or other documents showing **eligibility, and NRA PPC Classification Card** for those classified.

TEAM ELIGABILITY: Team Members must be from the same law enforcement agency and consist of four or two firing members and a Team Captain who may be a firing or non-firing member. They may be regular, reserve, retired law enforcement officers, or a mixture. Retired officers who now work for another agency **MUST** register under their current agency.

All members must have been in active service for a continuous period of at least 30 days with the same agency immediately preceding the day of competition or retired from the same agency.

A competitor may not fire as a member of both a two and four officer team. Example: a competitor cannot compete in both the Two Officer Open Class Semi-Automatic Team Match and the Four Officer Open Class Semi-Automatic Team Match.

Agencies may register multiple Four Officer Open Class Revolver and Open Class Semi-Automatic Pistol Teams but only one Two Officer Open Class Revolver Team and one Open Class Semi-Automatic Team can register per Team Classification. Team Classifications are determined by PPC Rule 19.16

PPC Rules Prohibit Pick-Up Teams

DAILY SCHEDULE:

Statistical Office: Will open each day at 8:00 am.

Thursday, April 16th 10:00 am to 2:00 pm
The range will open for practice. Practice tickets are \$5.00.

Friday, April 17th *First Relay will begin at 9:00 am with other Relays beginning after previous Relay is completed.*

Relay 1	Open Class Semi-Automatic Matches 8 thru 12	150 Rounds
Relay 2	Two & Four Officer Open Class Semi-Automatic Team Matches	60 Rounds Per Shooter
Relay 3	Distinguished Semi-Automatic Pistol Match 18	60 Rounds
Relay 4	Distinguished Production Pistol Match 24	60 Rounds

Saturday, April 18th *First Relay will begin at 9:00 am with other Relays beginning after previous Relay is competed.*

Relay 1	Open Class Revolver Matches 1 thru 5	150 Rounds
Relay 2	Two & Four Officer Open Class Revolver Matches	60 Rounds Per Shooter
Relay 3	NRA Distinguished Revolver Match 17	60 Rounds

The Awards Ceremony will be held as soon as the scores from the last relay are compiled.

REGISTRATION: Advanced registration is required with completed name, address, zip code, and current NRA Classification and category on the enclosed entry card. All entries must include all entry fees for the individual matches and registration. Entries without a check or money order will not be accepted. A refund will be made for cancellations provided that the cancellation notice is received prior to entry closing date. The registration fees will not be returned. Do not mail team entries or fees. These will be made upon your team's arrival at the statistical office.

ENTRY FEES: Registration Fee	\$ 20.00
Open Class Revolver Matches 1-6	\$ 65.00
Open Class Semi-Automatic Pistol Match 8-13	\$ 65.00
Distinguished Revolver Match 17	\$ 10.00
Distinguished Semi-Automatic Pistol Match 18	\$ 10.00
Distinguished Production Pistol Match 24	\$ 10.00
Package Registration <i>Includes all of the above matches & Registration Fee.</i>	\$ 170.00
Practice Day Ticket	\$ 5.00
Team Matches	
Two Officer Team	\$ 10.00
Four Officer Team	\$ 20.00

ENTRY CLOSING DATE: Entries will close at 12:00 Noon on Thursday, April 16, 2020, all entries received after that time will be squadded as space is available.

LATE ENTRY FEE: A \$15.00 late entry fee will be charged for entries received after April 15, 2020.

Enclosed entry card can be mailed to: Mike Jones
4399 Academy Drive
Memphis, Tennessee 38127
Phone: 901.268.0314 *Day*
FAX: 901.636.1617
E-Mail: michaele.jones@memphistn.gov

Make Checks Payable To: Memphis Police Pistol Team

ENTRY CONFIRMATION: If confirmation of your entry is desired, enclose a stamped, self-addressed business size envelope with your entry. No confirmation will be sent after the closing date.

CLASSIFICATION: Competitors will be registered using their current NRA Police Pistol Combat Classification of High Master, Master, Expert, Sharpshooter, Marksman or Classified. Classification cards must be presented at the time of entry. Competitors may check their current NRA Classification at <https://lecompetitions.nra.org/police-pistol-combat/shooter-classification-lookup/>.



Competitors not having a current PPC Classification Card, or Temporary Record Score Book will fire in the High Master Class.

SQUADDING: All matches will be squadded. Squadding Tickets may be picked up at the range after 2 p.m. on Thursday.

AWARDS SCHEDULE:

- Please understand that this Regional will not be run at a loss and must show some profit to justify the considerable efforts expended. Therefore, by being a competitor you agree that all the hope for awards in this program are entirely conditioned upon the number of participants.
- Dependent on additional sponsorship, merchandise awards will be given.
- No competitor may receive more than one firearm.
- In the event that there are fewer than 5 shooters in a classification they will be combined with the next higher classification.

Aggregate of Open Class Matches 6 & 13

First Place Overall	Gold NRA Medallion & NRA Trophy, and Cash
Second Place Overall	Silver NRA Medallion & NRA Trophy, and Cash
Third Place Overall	Bronze NRA Medallion & NRA Trophy, and Cash
First Place High Master	Cash or Prize Table and Trophy
First Place Master	Cash or Prize Table and Trophy
First Place Expert	Cash or Prize Table and Trophy
First Place Sharpshooter	Cash or Prize Table and Trophy
First Place Marksman	Cash or Prize Table and Trophy
First Place Classified	Cash or Prize Table and Trophy

NRA Distinguished Revolver Match 17:

- First Place Overall --- Cash Award
- Second Place Overall --- Cash Award
- Third Place Overall --- Cash Award
- Distinguished Points --- NRA Distinguished Points are Computed & Awarded by NRA Law Enforcement Competitions after the Tournament Results are received following PPC Rule Book Section B3.

NRA Distinguished Semi-Automatic Match 18 and Distinguished Production Pistol Match 24:

- First Overall --- Cash Award
- Second Overall --- Cash Award
- Third Overall --- Cash Award
- Distinguished Points --- NRA Distinguished Points are Computed & Awarded by NRA Law Enforcement Competitions after the Tournament Results are received following PPC Rule Book Section B3.

Team Matches 30, 31, 32, and 33:

Overall Winners --- First, Second and Third Place Teams will receive a NRA Team Trophy for their Department and one for each team member.

Prize Table: Competitors will chose in the following order (order will be set based on the number of entries in a category)

*****Only for those not already awarded Cash Award*****

2nd AGG. OF BOTH 1500s Prize Table and Trophy

An Award will be given to High New Shooter

An Award will be given to High Woman Shooter

Merchandise Give Away

On Saturday, beginning with the highest scoring competitor who has not already received award, competitors may select an item from the merchandise table until all items are gone. You must be present to participate.

CLAIMING AWARDS: ALL awards **MUST** be picked during the Awards Ceremony on Saturday.

Match Sponsors will not assume the responsibility of shipping any awards. Any awards not claimed will revert to the Match Sponsors. If a competitor cannot be present at the Awards Ceremony they must make arrangements to have a designated representative present to claim their award. The Awards Ceremony will be held at the close of Saturday.

CHALLENGES: A challenge fee of \$3.00 will be charged for each challenge made. See PPC Rule 16.1 for procedures.

PROTEST: See PPC Rule 16.2 for what may be Protested and 16.4 for how to Protest. The Protest Fee is \$ 10.00.

BREAKING OF TIES: Will be broken following PPC Rule 15.3.

RE-FIRES: No shooter will be allowed to re-fire for a defective gun, ammunition, or any other malfunctions of the competitor's equipment. Competitor may clear jams or malfunctions provided safety rules and conditions are adhered to. See PPC Rule 9.1, 9.2, 9.3, and 9.10 for further information.

TARGETS: NRA Official B-27 cardboard targets will be used for the Open Class Revolver and Open Class Semi-Automatic Pistol Matches. Official NRA B-27 paper targets will be used for all other matches.

SCORING: Competitor scoring will be utilized. Pursuant to PPC Rule 14.2, **NO** competitor will score their own target **NOR** may a competitor score the targets of a competitor from their same agency. If this cannot be avoided due to the Relay's makeup contact a Match Official to score the targets.

PPC Rules prohibit the use of plug-type gauges. Overlays and Eagle Eyes may be used by competitors.

It is the competitor's responsibility to make sure that his or her scorecards are completed with a signature, and are turned into the Statistical Office. Once the scorecard is signed, the value of the shots recorded on that card is final and cannot be changed.

AMMUNITION: Please See the Firearm Specifications Section.

OPTICAL DEVICES: Other than normal glasses worn for corrective eyesight purposes or sunglasses, Optical Devices will not be permitted on the range during match firing for use by competitors. Optical devices prohibited also include the use of mechanical iris, eye patch, or eye cover. For Team coaches during team matches, see Rule 12.6.

Eye & Ear Protection is Mandatory for all Shooters

COURSES OF FIRE: The Range Tower will announce the course of fire, shooting positions and time prior to the start of each Match and Stage. Time will start with a loaded gun in holster. No part of the competitor's hand may touch the gun or holster until the command to commence firing is given.

All loading will be with cartridges taken from the competitor's pocket, cartridge belt, mechanical loaders, or special pouch. To force reloading under time restraints, magazine loading is limited to 6 rounds per magazine. There is no limit on the number of magazines you have but all used during the firing of a stage or string **MUST** be on your person.

A conventional right or left-hand holster must be used. For safety reasons, shoulder, cross draw or holsters which require releasing by insertion of finger within the trigger guard will not be allowed. Holster cannot be tied down.

NRA PPC Match Number		Course Description
Revolver Match	Semi-Automatic Pistol Match	
NRA Open Class Division Matches		<i>150 Rounds Total</i>
Match 1	Match 8	Two stages of 12 shots each fired double action standing without support. First stage fired at 7 yards and second stage fired at 15 yards. Time limit is 20 seconds per stage including time to reload.
Match 2	Match 9	At 25 yards, 18 rounds fired; 6 shots kneeling; 6 shots standing left handed with support from behind left side of barricade, 6 shots standing right handed with support from behind right side of barricade, all fired double action. Time limit 90 seconds, including time to reload. <i>Change Target</i>
Match 3	Match 10	At 50 yards, 24 rounds fired; 6 shots sitting; 6 shots prone; 6 shots standing left handed with support from behind left side of barricade; 6 shots standing right handed with support from behind right side of barricade. All shots may be fired single or double action. Time limit 2 minutes and 45 seconds including time to reload.
Match 4	Match 11	At 25 yards, 24 rounds fired in two stages of 12 shots each fired double action, standing without support. Time limit 35 seconds for each 12-shot stage including time to reload. <i>Change Target</i>
Match 5	Match 12	Stage 1: 7 yards, 12 shots double action standing without support. Time limit 20 seconds including time to reload. Stage 2: 25 yards, 6 shots kneeling; 6 shots standing left handed with support from behind left side of barricade, and 6 shots standing right handed with support from behind right side of barricade. All fired double action. Time limit 90 seconds, including time to reload. Stage 3: 50 yards, 6 shots sitting; 6 shots prone; 6 shots standing left handed with support from behind left side of barricade and 6 shots standing right handed with support from behind right side of barricade. All shots may be fired single or double action. Time limit 2 minutes and 45 seconds including time to reload. Stage 4: 25 yards, 6 shots double action standing without support. Time limit 12 seconds.
Match 6	Match 13	Match 6 is the Aggregate score of the Open Class Revolver shooters Match 1 through Match 5 with a total possible score of 1500 points. Match 13 is the Aggregate score of the Open Class Semi-Automatic Pistol shooters Match 8 through 12 with a total possible score of 1500 points.
NRA Distinguished Matches		<i>60 Rounds Per Match</i>
Match 17		Distinguished Revolver Match: Firearms will be inspected and triggers may be weighed. See PPC Rule 3.4 for firearm specifications. Course of Fire = Match 5 Above, the NRA National Police Course.
	Match 18 and Match 24	Distinguished Semi-Automatic Pistol and Distinguished Production Semi-Automatic Pistol Matches: Firearms will be inspected and triggers weighed. See PPC Rule 3.5 and 3.10 for firearm specifications. Course of Fire = Match 12 Above, the NRA National Police Course.

NRA PPC Match Number		Course Description
Revolver Match	Semi-Automatic Pistol Match	
NRA Open Class Team Matches		<i>60 Rounds Per Shooter For Each Match</i>
If sufficient targets are available, Four Officer and Two Officer Teams will fire on the same relay. Regardless of the number of relays fired, a competitor may shoot on only one revolver and one semi-auto team.		
Match 30		Four Officer Open Class Revolver Team Match: Competitors will fire the Open Class Revolver Match 5 listed on the previous page.
Match 31		Two Officer Open Class Revolver Team Match: Competitors will fire the Open Class Revolver Match 5 listed on the previous page.
	Match 32	Four Officer Open Class Semi-Automatic Pistol Team Match: Competitors will fire the Open Class Semi-Automatic Pistol Match 12 listed on the previous page.
	Match 33	Two Officer Open Class Semi-Automatic Pistol Team Match: Competitors will fire the Open Class Semi-Automatic Pistol Match 12 listed on the previous page.

Firearms Allowed: Please see NRA Police Pistol Combat Rule Book Section 3 for Firearm requirements and the *NRA PPC Rule Book Quick View Firearm Matrix* charts reproduced below

APPLIES TO ALL FIREARMS		Rule 3.1
<p>Each competitor is responsible for their firearm and any which may be questionable should be submitted to the Tournament Director, Referee, or 3-Man Jury for decision prior to being used.</p> <p>All standard safety features of the pistol must operate properly.</p> <p>With respect to Sections 3.2 through 3.10, and in addition to the firearm specific regulations below, the following features are either Allowed or Prohibited on all firearms.</p>		
Action work to make a crisper and/or smoother trigger pull	Allowed	
Fixed or adjustable sights	Allowed	
Sight Blackening	Allowed	
Modification or change of stocks because of the size of a competitor's hand or to facilitate loading	Allowed	
Internal modifications that would render the firearm less safe than originally designed by the manufacturer	Prohibited	
Any external modifications, except those allowed within each rule	Prohibited	
Front sight extending beyond muzzle	Prohibited	
Compensators, barrel venting, or barrel porting	Prohibited	
<p>Ammunition: No high speed or Magnum ammunition will be allowed. Ammunition must be hand loaded or factory loaded to produce sufficient velocity to pass through the target AND the backer. Shots which do not pass through the target and the backer will be scored as misses.</p>		

OPEN CLASS REVOLVER		Rule 3.2
<p>In addition to the specifications within Section 3.1, the following specifications apply for Open Class Revolvers.</p>		
<p>Firearm / Caliber: A revolver chambered to fire center-fire cartridges .32 caliber or larger</p>		
Barrel Length Maximum	6 Inches	
Trigger Pull Minimum: Single Action	2.5 Pounds	
Sight Radius Maximum	8.5 Inches	
Sight Guards which do NOT extend rearward more than 2 inches	Allowed	
External Trigger Stops	Allowed	
Grips/Stocks that when measured from side-to-side at the base are greater than 1 ¾ inches in thickness (1.75')	Prohibited	
<p>Caliber / Ammunition: Either hand loaded or factory loaded ammunition may be used. Wadcutter ammunition is allowed.</p>		

NRA PPC Rule Book Quick View Firearm Matrix

OPEN CLASS SEMI-AUTOMATIC PISTOL		Rule 3.3
In addition to the specifications within Section 3.1, the following specifications apply for Open Class Semi-Automatic Pistols.		
Firearm / Caliber: Center-fire pistols of .35 caliber or larger. All double action semi-automatic pistols must fire the first shot of every stage double action except at the 50 yard line.		
Barrel Length Maximum	6 Inches	
Trigger Pull Minimum Single or Double Action	3.5 Pounds	
Sight Radius Maximum	8.5 Inches	
Sight Guards which do NOT extend rearward more than 2 inches	Allowed	
Extended Magazine Well Funnel	Allowed	
Magazine Bumper Pad	Allowed	
External Trigger Stops	Allowed	
Caliber / Ammunition: Either hand loaded or factory loaded ammunition may be used. Wadcutter ammunition is allowed		

DISTINGUISHED REVOLVER		Rule 3.4
In addition to the specifications within Section 3.1, the following specifications apply for Distinguished Revolvers.		
Firearm / Caliber: A factory manufactured (catalog item) revolver capable of chambering and firing .38 Special ammunition. Revolver may chamber no more than six rounds.		
Barrel Length Maximum	6 Inches	
Trigger Pull Minimum - Single Action	2.5 Pounds	
Installation of any unmodified trigger sold by the manufacturer	Allowed	
Chamfered Cylinder	Allowed	
Adjustable Front Sight	Prohibited	
Trigger modification as to length, width, or grooves	Prohibited	
Trigger Shoe	Prohibited	
External Trigger Stop	Prohibited	
Thumb Rest	Prohibited	
Grips/Stocks that when measured from side-to-side at the base are greater than 1 ¾ inches in thickness (1.75")	Prohibited	
Tape on the stock/grip	Prohibited	
Any substance that results in a sticky surface to the grip/stock, or hand	Prohibited	
Weighted grip/stock	Prohibited	
Installation of sights that require alteration of the firearm for installation.	Prohibited	
Ammunition: Either hand loaded or factory loaded ammunition. No wadcutter ammunition is allowed.		

DISTINGUISHED SEMI-AUTOMATIC PISTOL		Rule 3.5
In addition to the specifications within Section 3.1, the following specifications apply for Distinguished Semi-Automatic Pistols.		
Firearm / Caliber: Factory manufactured (catalog item) center-fire semi-automatic pistol capable of chambering and firing .35 caliber or larger ammunition, or FN 5.7 x 28 caliber ammunition. All double action semi-automatic pistols must fire the first shot of every stage double action except at the 50 yard line.		
Barrel Length Maximum	6 Inches	
Trigger Pull Minimum Single or Double Action.	3.5 Pounds	
Sight Radius Maximum	8.5 Inches	
Open Sights, from any Manufacturer provided such sights do not require alteration of the firearm for installation.	Allowed	
Extended Magazine Well Funnel	Allowed	
Magazine Bumper Pads	Allowed	
Finger Groove and Slip on Grips	Allowed	
Any accessories, parts, or components which are manufactured to duplicate, in materials and dimensions, the original as offered by the manufacturer of the pistol.	Allowed	
Smith & Wesson Model PPC9 Pistols	Allowed	
Adjustable Front Sight	Prohibited	
Full-length Bo-mar type rib on the slide	Prohibited	
External Trigger Stops	Prohibited	
Thumb Rest	Prohibited	
Grips/Stocks that are flared at the base	Prohibited	
Tape on the grip/stock	Prohibited	
Any substance that results in a sticky surface to the grip/stock or hand	Prohibited	
Weighted grip/stock	Prohibited	
Ammunition: Either hand loaded or factory loaded ammunition. No wadcutter ammunition is allowed.		

NRA PPC Rule Book Quick View Firearm Matrix

PRODUCTION PISTOLS and DISTINGUISHED PRODUCTION PISTOLS		Rule 3.10
In addition to the specifications within Section 3.1, the following specifications apply for Production Pistols.		
Firearm / Caliber: Approved Pistols for this Division are listed in Police Pistol Combat Bulletin 14.1 on the Law Enforcement Competitions website. To be considered for approval the pistol must be a mass produced center-fire semi-automatic pistol made for police or military use (at least 1,000 pistols), a stock catalog item that is unmodified from its original factory condition, and have a double, double/single, or striker type action. Double/single actions pistols must have a manual decocking device, or equipped with an automatic decocker that returns the pistol to double action mode when the slide is released. All double/single action and double action pistols must fire the first shot of every stage double action.		
Barrel Length Maximum	5 Inches	
Single Action Models	Prohibited	
Trigger Pull Minimum: Single or Double Action	3.5 Pounds	
Sight Radius Maximum	7.5 Inches	
Installation of extended magazine releases and slide catches produced by the pistol's manufacturer.	Allowed	
Replacement of the factory fixed or adjustable service sights with another service type sight, luminescent service sight, or fiber optic service sight sold by the pistol's manufacturer as a factory catalog replacement part for the pistol, or with an approved sight listed in Police Pistol Combat Bulletin 16.1 on the NRA Law Enforcement Competitions website. In no case may the firearm be altered for any sight installation.	Allowed	
Magazine bumper pads	Allowed	
Finger groove and slip on grips	Allowed	
Single Action Pistols	Prohibited	
Custom or competition model Pistols, even if a catalog item or another version of the manufacturer's base stock model.	Prohibited	
Any external change to the pistol from its original manufactured condition, including grips, extended magazine wells/funnel, trigger stops, trigger shoes, etc.	Prohibited	
Changing any internal part or component with a non-original factory manufactured part.	Prohibited	
Tape on the grip/stock	Prohibited	
Any Substance that results in a sticky surface to the grip/stock or hand.	Prohibited	
Ammunition: Either hand loaded or factory loaded ammunition. No wadcutter ammunition is allowed.		

When you get your Production Distinguished scorecard **YOU** must record your competitor information, the information about the Production Pistol and Sights you want to use, the page number your pistol is listed on and its Approval Number in **NRA Police Pistol Combat Bulletin 14-1.**

Prior to shooting, your pistol **MUST** be **INSPECTED** and **TRIGGER PULL WEIGHED** to Certify your pistol as approved by a Tournament Official who will sign your scorecard.

Scorecards are later reviewed by NRA LE Competitions before your score is validated and recorded. Scorecards with missing information or not signed by a Tournament Official are not recorded so **YOU** need to make sure all sections on the scorecard are complete.

Please note that **YOU** must record your sight information on your NRA Production Distinguished Pistol Scorecard.

So if you have replaced the original sights make sure you know the name, model of the sight, the page number they are listed on, and their Approval Number as listed in **Police Pistol Combat Bulletin 16-1.**

The NRA has made it clear that **NO** matter what **APPROVED** Replacement Sight is used, the sights **MUST** keep a Duty Gun Point of Aim/Point of Impact, **NOT** a competition set up, such as a Neck Hold, Shoulder Hold, or Head Hold.

A Duty Gun Point of Aim/Point of Impact sight set up requires the sights to be aligned on the **X Ring/Center Mass** to obtain a Hit in the **X Ring/Center Mass** area.

Pistols with competition sight set ups will be **Disqualified**, even if having already been used to fire a Match. Competitors may be required to allow their pistol to be test fired, or checked with a laser boresighter to check the sight set up.

To see PPC Bulletins 14-1 and 16.1 use your smart phone camera to scan this Quick Reader Code ~ no special app or Software is needed on current phones.



LODGING INFORMATION: The following family priced motels are within 10-20 minutes of the firing range. Most have government rates available.

Admiralty of Plantation Oaks

6656 Highway 51 North
Millington, TN 38053
901-872-8000
Government Rate per night \$66.95

Hampton Inn & Suites

8834 Highway 51 North
Millington, TN 38053
901-372-4435
Government Rate per night \$93.00

The Admiralty Inn

8181 Highway 51 North
Millington, TN 38053
901-873-1000
Government Rate per night \$54.95

Motel 6

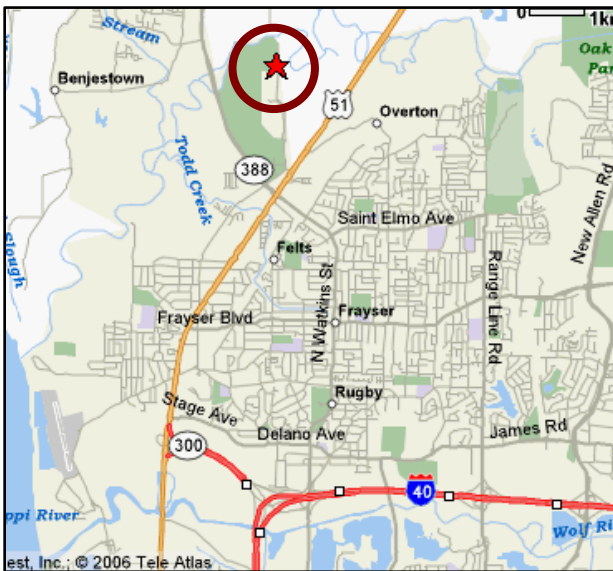
5090 Cooper Creek
Millington, TN 38053
901-872-3640
Government Rate per night \$93.00

Quality Inn

7726 Highway 51 North
Millington, TN 38053
901-873-2222
Call for Government Rate

DIRECTIONS TO THE MEMPHIS POLICE FIRING RANGE: 4399 Academy Drive
Memphis, Tennessee 38127
Phone: 901.268.0314 *Daytime*

[*Click Here for Online Directions*](#)



Whether you are traveling into Memphis going east or west bound I-40, take the N/B I-40 (aka northern leg of I-40) exit.

Once on the northern leg of I-240/40 take it all the way until you come to the North Watkins (3) exit.

After you have exited from the Interstate onto North Watkins go N/B approximately 5 miles to Thomas (aka Hwy 51) then make a right (you will still be going N/B).

Once on Thomas, you will want to get in the far left lane. At the third median crossing take a left onto Millington St. and follow it until you come to the Police and Fire Academy signs.

At the signs you will want to stay to the right, which is O.K. Robertson Rd., follow it until it dead ends and that is where the range will be located.

For Statistical Office Use Only
Competitor Number

Mid-South Police Classic Regional Police Pistol Combat Championship Tournament Entry Form



Please Print Clearly & Readable

To register, please complete this form fully, attach payment check payable to **Memphis Police Pistol Team** and mail it to:

R/O Stephen Betz
Firearms Training Unit
4399 Academy Drive
Memphis, TN 38127

If you have question please call 901-453-5365 (Day) or send an e-mail to michaele.jones@memphistn.gov

Name: _____ NRA Membership Number: _____
First Last Membership NOT Required

Address: _____
Street City State Zip Code

E-mail Address: _____ Phone Number: _____

Please CIRCLE Your NRA Assigned Classifications

Open Class Revolver Classification: HM MA EX SS MK CL UNCLASSIFIED

Open Class Semi-Automatic Pistol Classification: HM MA EX SS MK CL UNCLASSIFIED

Please CIRCLE Your Law Enforcement Category

Federal State County Municipal Private Law Enforcement Military Police Retired

Please Check the Package or Matches you are Registering For

- _____ Package Registration *Includes All Individual Matches & Registration Fee* \$ 170.00
- _____ Individual Match Option Registration Fee \$ 20.00
Select the Matches You Wish to Fire
- _____ Open Class Revolver Matches 1-6 \$ 65.00
- _____ Open Class Semi-Automatic Pistol Match 8-13 \$ 65.00
- _____ Distinguished Revolver Match 17 \$ 10.00
- _____ Distinguished Semi-Automatic Pistol Match 18 \$ 10.00
- _____ Distinguished Production Pistol Match 24 \$ 10.00

Total Enclosed: _____

Signature: _____ Date: _____