



NRA Law Enforcement Competitions  
**Police Pistol Combat Program Bulletin**

<b>Number</b>	<b>11-3</b>
<b>Rule</b>	<b>3.3 and 3.1</b>
<b>Topic</b>	<b>Distinguished Revolvers</b>
<b>Sub-Topic</b>	<b>Modification of Front Sight</b>
<b>Date</b>	<b>4-28-2011</b>

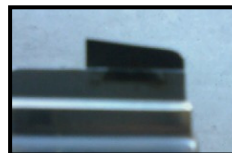
**ISSUE:** On an eligible Distinguished Revolver, can external modifications be performed to allow changing of the front sight.

Two examples are provided for this bulletin.

Example 1: A shooter has a Smith & Wesson Model 66 and has the factory sight removed, the base ramp milled down slightly, a dovetail cut into the base, and a new front sight installed.



Smith & Wesson Insert  
Type Front Sight



New Front Sight Installed in  
Dovetail Cut in Milled Base



Example 2: A shooter wants to install a Weigand Interchangeable Front Sight System on a Smith & Wesson L Frame Revolver. The installation requires the original sight and base to be milled off, the top of the barrel milled to accept a new sight base assembly, and then a number of front sight blades can be installed or interchanged as desired.



Weigand  
Interchangeable Front  
Sight Base



Sight Base Installed



Front Sight Installed  
in Base

**FINDING:** Both examples involve external modifications to the revolver. Section 3.1 prohibits any external modification to any firearm used in Police Pistol Combat matches unless the modification is allowed in the Rule Section for the specific handgun in question.

Distinguished Revolvers are governed by Section 3.3. There is no exception concerning external modifications in Section 3.3.

As such, since both examples require external modifications, the modifications would make the revolvers ineligible for use in NRA Police Pistol Combat Distinguished Revolver Matches.

**NOTE:** Since Section 3.1 covers all Police Pistol Combat firearms, the above finding also applies to Service Revolvers, Off Duty Revolvers, Distinguished Semi-Automatic Pistols, Stock Semi-Automatic Pistols and Off Duty Semi-Automatic Pistols concerning external modifications for sight replacement.

**APPLICABLE RULE:** Rule Section 3.1 governing ALL firearms and Rule Section 3.3 governing Distinguished Revolvers of the 2011 Edition of the NRA Police Pistol Combat Rule Book.

**Rule Section 3.1 - All Firearms:** *With respect to Rules 3.2 through 3.9, and in addition to the firearm specific regulations below, the following features are either allowed or prohibited on all of the firearms described.*

**Allowed:**

1. *Sight blackening.*
2. *Fixed or adjustable sights.*
3. *Action work to make a crisper and/or smoother trigger pull.*
4. *Stocks may be modified or changed because of the size of a competitor's hand or to facilitate loading.*

**Prohibited:**

1. *Compensators, barrel venting, barrel porting.*
2. *Internal modifications that would render the firearm less safe than originally designed by the manufacturer.*
3. **Any external modifications, except those allowed within each rule.**
4. *The front sight may not extend beyond the muzzle.*

**3.3 Distinguished Revolver:** *A factory manufactured (catalog item) revolver capable of chambering and firing .38 Special ammunition. If the trigger is capable of single action it must be capable of lifting 2.5 pounds when gun is cocked for single action firing.*

**Allowed:**

1. *Barrel length up to 6 inches.*
2. *Chamfered cylinders.*

**3. Any unmodified trigger sold by the manufacturer.**

**Prohibited:**

- 1. Weighted grips or grip panels.**
- 2. Adjustable front sight.**
- 3. Trigger Shoes.**
- 4. External trigger stops.**
- 5. Trigger modification as to length, width, or grooves.**
- 6. Tape on the stock/grip.**
- 7. Thumb rest.**
- 8. Grips/Stocks that when measured from side-to-side at the base are greater than 1 <sup>3</sup>/<sub>4</sub> inches in thickness (1.75").**
- 9. Any substance that results in a sticky surface to the stock/grip or hand.**
- 10. Revolver capable of chambering more than six (6) rounds.**